

Skotland 2019

6. del

Vi gik rundt i Edinburgh med rejselederen.
Grethe og jeg var kun med på den første
del for vi ville hellere på museum.









THE MALT SHOVEL

THE MALT SHOVEL



FISH CHIPS

FINE SCOTISH SPIRITS

CLASSIC GREAT PUB FOOD

PURE VOYAGE QUALITY CASK GREAT BEER





BREWHEIMA

BEER PALACE -- KITCHEN

CAFFÈ -- PROSECCO BAR

A man in a dark jacket and light shirt is walking on the sidewalk, pulling a black suitcase. He is positioned to the left of the 'BEER PALACE -- KITCHEN' entrance.

Outdoor seating area with several small tables and white chairs located to the left of the 'BEER PALACE -- KITCHEN' entrance.

Outdoor seating area with several small tables and white chairs located in front of the central floral wall.

Outdoor seating area with several small tables and white chairs located to the right of the central floral wall.

Outdoor seating area with several small tables and white chairs located to the right of the 'CAFFÈ -- PROSECCO BAR' entrance.





Edinburgh Waverley
→ 10:15

11 11

12

At number 10/15 Platform 12
Glasgow Queen St
09:55 - 10:05
Glasgow Queen St
10:15 - 10:25
Glasgow Queen St
10:35 - 10:45

12



TOPSHOP

TOPMAN

TOPSHOP
TOPMAN

THE
BALL
ROOM
SPORTS BARS

www.BallRoomScotland.com

VOTED SCOTLAND'S FAVOURITE
SPORTS BARS & POOL HALLS

MORNINGSIDE • MEADOWBANK • DUNFERMLINE
ALSO IN GLASGOW, BELLSHILL, COATBRIDGE & PERTH

EDINBURGH NO. 949









LIVINGSTONE

Museums & Galleries Edinburgh

Discover our other venues

SCOTT MONUMENT

Come explore this spectacular Victorian Gothic monument to Scottish author Sir Walter Scott. It is the largest monument to a writer in the world and you can climb all 287 steps to the top. ADMISSION CHARGES APPLY. OPEN SEVEN DAYS A WEEK



MUSEUM OF EDINBURGH

The City of Edinburgh's treasure box - a maze of historic rooms crammed full of iconic objects from the Capital's past. Learn all about the history of this great city. FREE ADMISSION



CITY ART CENTRE

Scotland's emporium of the visual arts. It is both home to the city's collection of Scottish Art, and one of the UK's leading temporary exhibition spaces. FREE ADMISSION



MUSEUM OF EDINBURGH

FREE ADMISSION



THE PEOPLE'S STORY MUSEUM

A museum with a difference, using oral history, reminiscence, and written sources to tell the story of the lives, work and leisure of the ordinary people of Edinburgh, from the late 18th century to the present day. FREE ADMISSION

MUSEUM OF CHILDHOOD

The first museum in the world dedicated to the history of Childhood, displaying toys and games from across the generations. FREE ENTRY

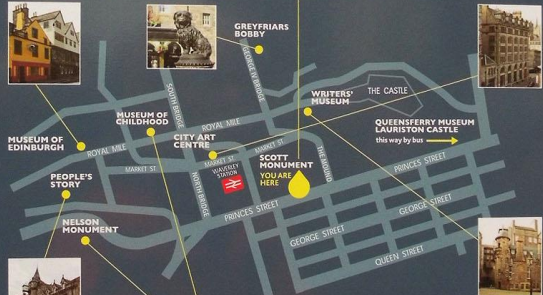


THE WRITERS' MUSEUM

Edinburgh's literary museum, dedicated to the lives and work of Scotland's great literary figures, in particular Robert Burns (1759-1796), Sir Walter Scott (1771-1832), and Robert Louis Stevenson (1850-1894). FREE ADMISSION



THE WRITERS' MUSEUM



edinburghmuseums.org.uk

• EDINBURGH •
THE CITY OF EDINBURGH COUNCIL











GREYHAR'S DOGGY

FROM THE LIFE JUST BEFORE HIS DEATH

寿司 趣 SLURRRP Hakaya 花井

JAPANESE KITCHEN BAR & TAKENAWA



A TRIBUTE
TO THE AFFECTIONATE FIDELITY OF
GREYFRIARS BOBBY.
IN 1858 THIS FAITHFUL DOG FOLLOWED
THE REMAINS OF HIS MASTER TO GREYFRIARS
CHURCHYARD AND LINGERED NEAR THE SPOT
UNTIL HIS DEATH IN 1872.

WITH PERMISSION
ERECTED BY THE
BARONESS BURDETT COUTTS



**GREYFRIARS
BOBBY**



'Bobby' was the name of a Skye Terrier who belonged to John Gray, a night watchman for the Edinburgh Police. The two were inseparable for two years.

However, in February 1858, Gray died of tuberculosis.

He was buried in Greyfriars Kirkyard. Bobby, who survived John Gray by 14 years, is said to have spent the rest of his life sitting on his master's grave. The gardener and keeper of Greyfriars tried on many occasions to evict Bobby, but in the end they took pity on him. He was built a shelter and was fed regularly.

Bobby never spent a night away from his master's grave even in the most dismal weather conditions.

In 1867, the Lord Provost of Edinburgh paid for Bobby's dog licence, making him the responsibility of the City Council. Bobby sadly died in 1872. He could not be buried within the cemetery itself since it was consecrated ground; instead he was buried just inside the gate of Greyfriars Kirkyard, not far from John Gray's grave.



Edinburgh's best friend

Welcome to Greyfriars cemetery and Kirk.

Explore this historic cemetery and kirk, a place of worship and burial for over 400 years.

Visit the resting place of many important Edinburgh people, as well as the cemetery's most famous resident – Greyfriars Bobby.

Find out more...

Discover more about Greyfriars Bobby by visiting the **Museum of Edinburgh** on the Royal Mile. Explore Greyfriars Kirk and museum to find out more about the history of the church.



MUSEUM OF EDINBURGH
Huntly House, 142-146 Canongate
Royal Mile, Edinburgh EH8 8DD

edinburghmuseums.org.uk

GREYFRIARS BOBBY
DIED 14TH JANUARY 1872
AGED 16 YEARS

LET HIS LOYALTY & DEVOTION
BE A LESSON TO US ALL

ERECTED BY THE DOG AID SOCIETY
OF SCOTLAND & UNVEILED BY H.R.H.
THE DUKE OF CLOUGESTER B.C.V.O.
ON 13TH MAY 1991







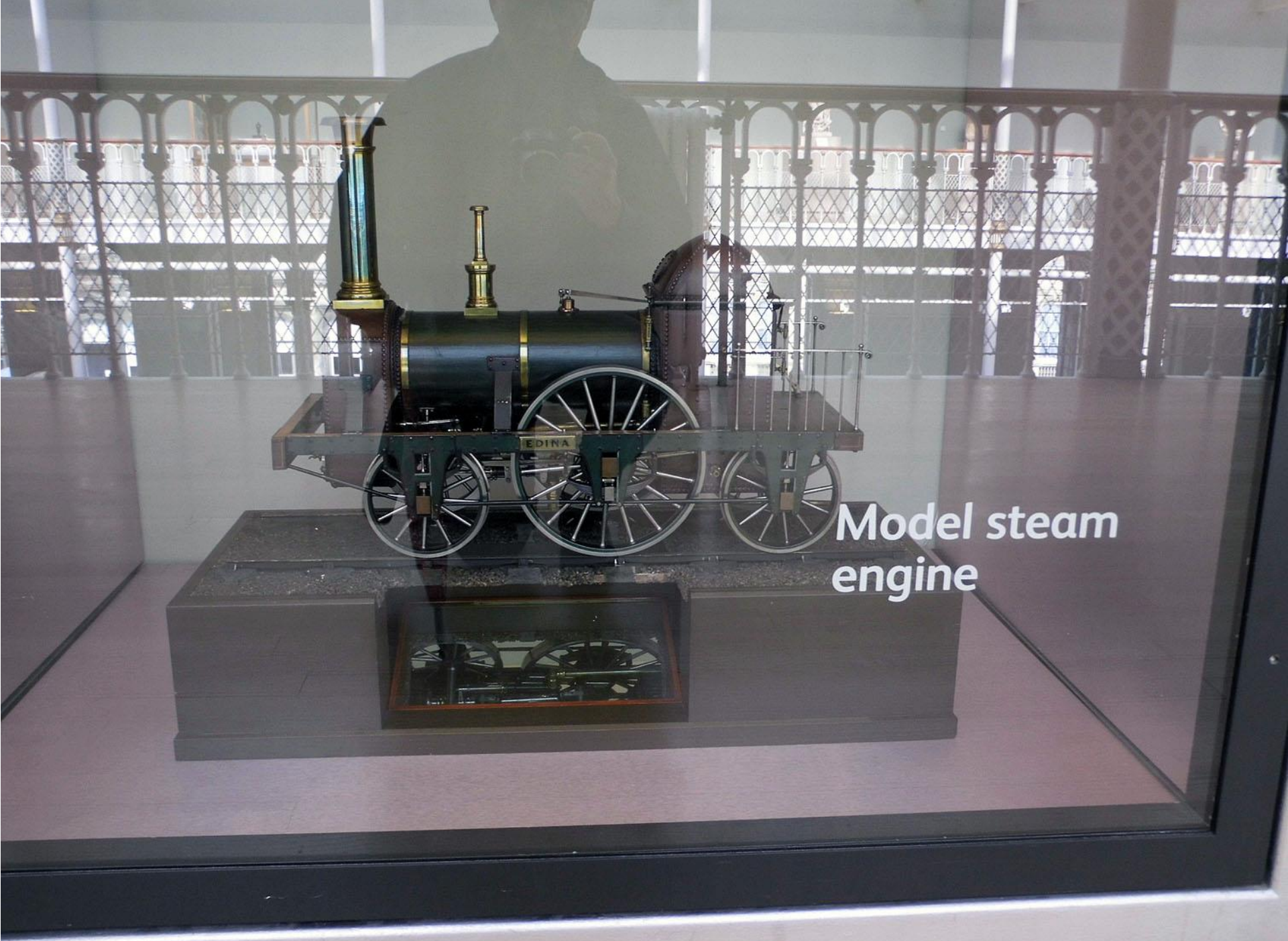








Track racing bicycles
do not use brakes



Model steam engine

Temporary display

This model of a Robert Stephenson designed locomotive of (1840) is on display while the working model of the 1848 Great Western Railway locomotive is overhauled in the museum conservation workshop.

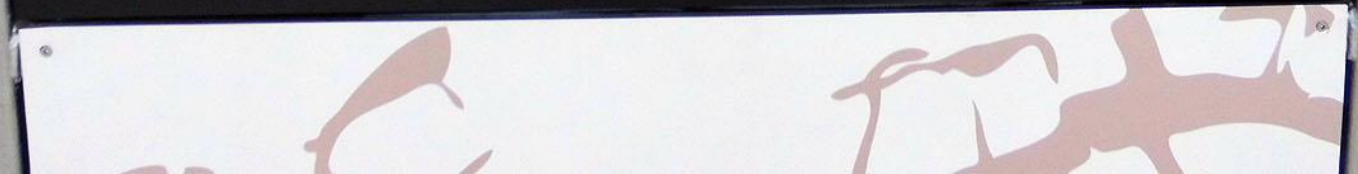
This model was made in the Bedlington Ironworks at the same time as the actual locomotive and was presented by friends and pupils to Professor Forbes at Edinburgh University in 1840.

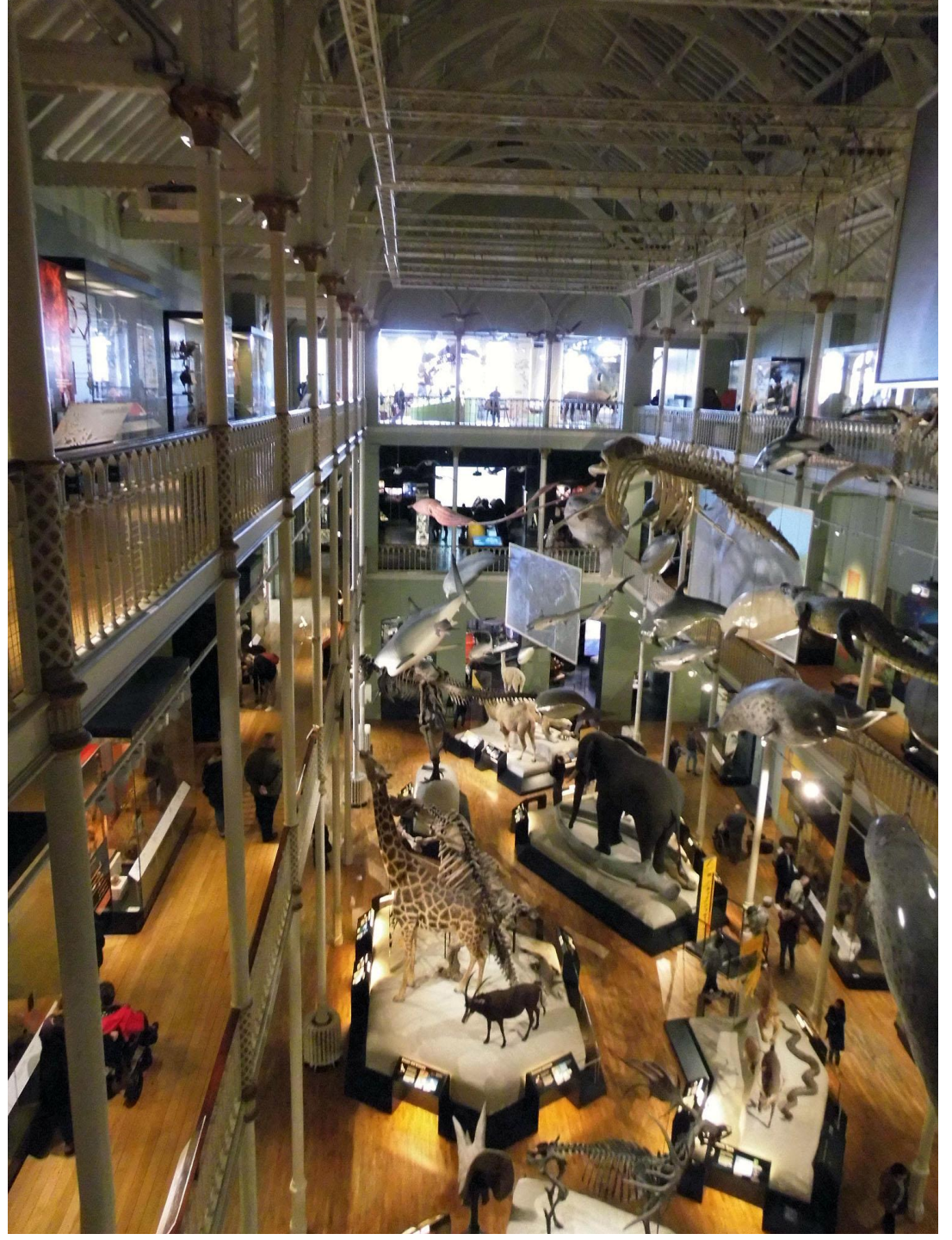
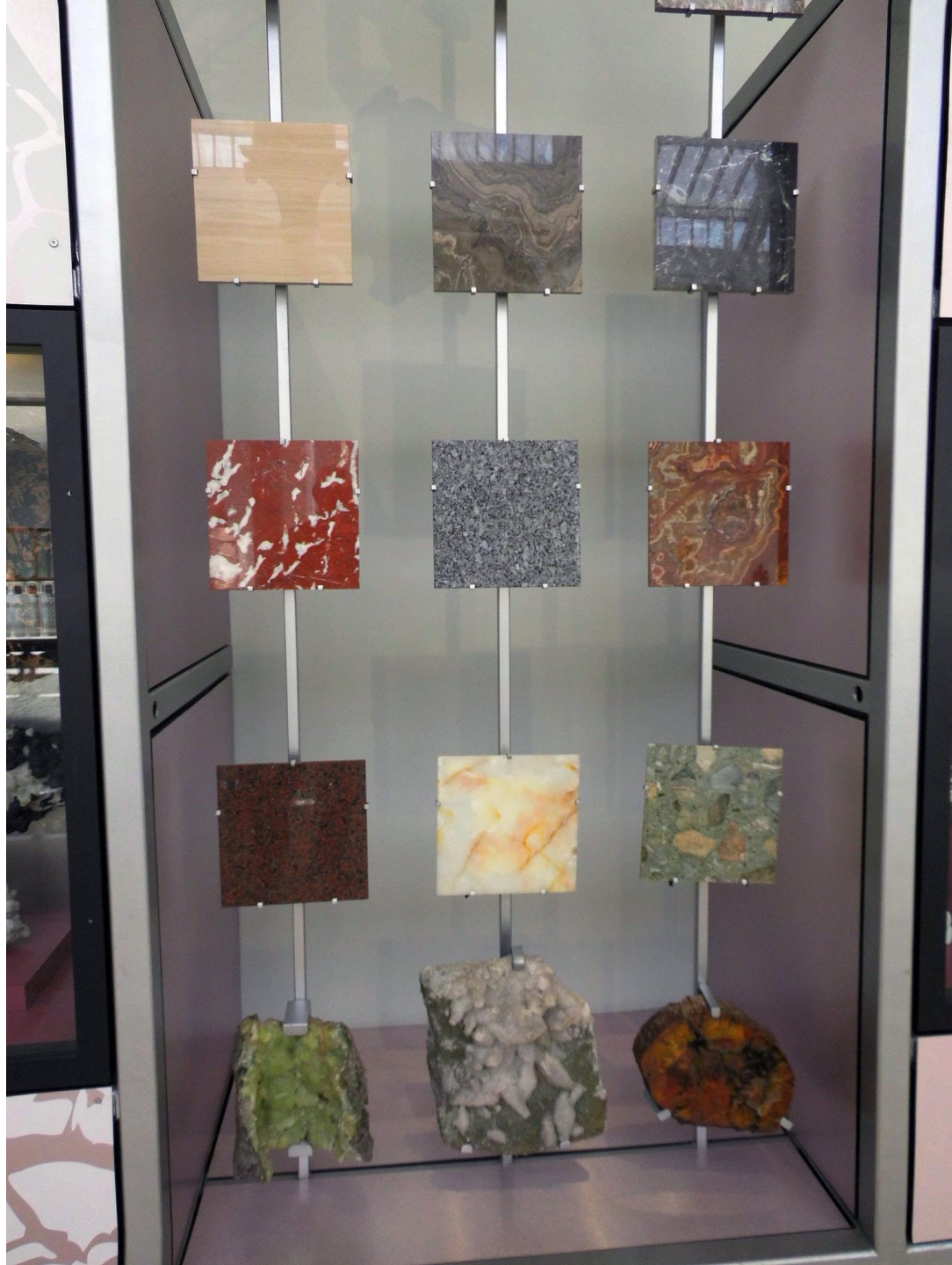


Probably the largest
sarcolite crystal
in the world

From the slopes of Vesuvius

This fine crystal is the largest known specimen of sarcolite or any other mineral found only in the gullies in Italy - Mount Vesuvius and the Apennine Mountains. It was first discovered in 1842 and named by Dr. William Thomson (1811-1892). When the first specimen was sent to the University of Edinburgh and later transferred to the Natural History Museum.





THREAT TO SURVIVAL
POLLUTION

Human greed and global change

As global human populations rapidly increase, increasingly sophisticated technologies are used to exploit and deplete natural resources. Such intensive development damages the natural systems that regulate the air, soil and water on which all life depends.

Extinction rates may now be 1000 times greater than the natural background rate. If we do not change our ways, we will threaten our own survival. Life will continue, but we may not be here to see it.

University of
Illinois, Urbana and Champaign
Department of
Ecology and Evolutionary Biology
Champaign, Illinois, USA



Donkey
The donkey is a member of the horse family, Equidae. It is a large, sturdy animal with a long neck and a thick coat of hair. It is known for its strength and endurance, and has been used for centuries as a pack animal and for transport. The donkey is a domesticated animal and is found in many parts of the world, particularly in the Middle East and Africa.

Swan
The swan is a large, white waterfowl with a long, graceful neck. It is known for its beauty and its ability to fly long distances. There are several species of swans, including the Mute Swan, the Trumpeter Swan, and the Whooping Swan. Swans are often found in lakes, rivers, and ponds, and are known for their nesting habits.

Connecting Species
The donkey and the swan are both members of the class Mammalia. The donkey is a member of the order Artiodactyla, while the swan is a member of the order Pelecaniformes. Both animals are found in many parts of the world and have been domesticated by humans.





Informational text on a white panel, partially obscured by the glass and other specimens.

Scottish reintroductions
A taxidermy specimen of a mountain goat with long, dark, spiraling horns and white fur is mounted on a wooden base. The background is a blue wall with a silhouette of a tree and other taxidermy specimens visible in the distance.

